

VMT 4

Network Video Matrix Switch



DESCRIPTION

The TRANTEK **VMT-4 – Network Video Matrix Switch** controls a virtual matrix of video codecs on a digital IP network via traditional CCTV keyboards. It provides analogue CCTV video matrix functionality to networked video applications. It is ideally suited to the integration of IP network based video and audio encoders to existing analogue installations or in situations where operations are better served by the use of traditional CCTV control keyboards and dedicated monitors.

The VMT-4 can be used in conjunction with other VMT switches or PC based GUI management workstations. The VMT-4 optimises bandwidth use by streaming only the cameras that are being monitored.

The VMT is configured over the network using a Web browser.

APPLICATIONS

The **VMT-4 - Network Video Matrix Switch** is used in situations where dedicated CCTV control keyboards are the preferred user interface for the management of IP network video surveillance systems. It consists of a small unit to which a CCTV keyboard is connected.

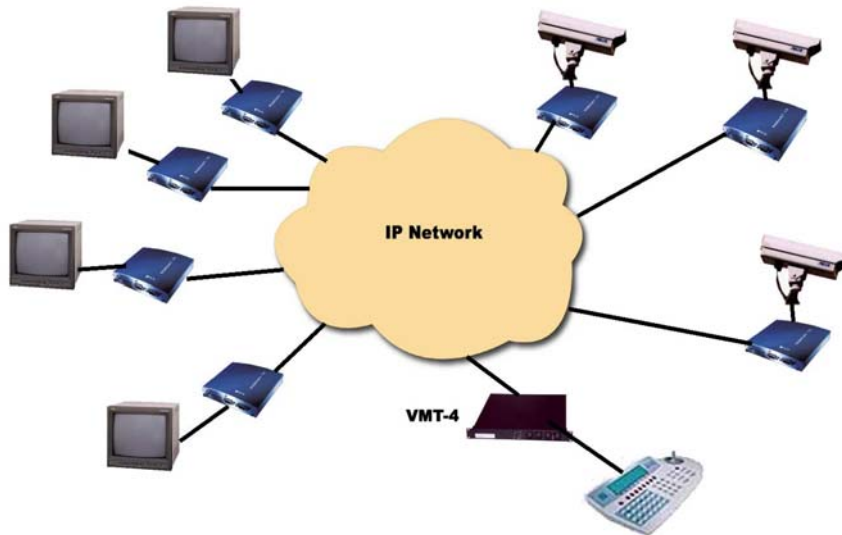
Applications include:

- ✓ Security Control Rooms
- ✓ Transport Operation and Monitoring Facilities
- ✓ Building Management Control Rooms
- ✓ Plant monitoring facilities
- ✓ Expansion of existing analogue based facilities to include IP network or Internet based cameras

VMT 4 – Network Video Matrix Switch

FEATURES

- ✓ Network Matrix connections controlled with a standard CCTV keyboard
- ✓ Web page for easy configuration
- ✓ Dedicated CCTV operation
- ✓ Supports keyboards from different vendors on the same LAN network
- ✓ Supports control of mixed vendor PTZ protocols on the same LAN
- ✓ Support for different CCTV keyboards and PTZ cameras on application



SPECIFICATIONS

Supported Digital Encoders:	VCS VideoJet and VCS IP Cameras
CCTV Keyboards:	Pacom 2030/2035 Pelco CM9760-KBD Pelco ASCII Protocol (KBD100, KBD200, KBD300) GE Kalatel KTD-405, DVMRe Multiplexer DVR
PTZ Protocols:	Pelco D, P Elbex EX2000-8000 GE Calibur (ImpacNet), Kalatel ASCII Interface protocol
Power Supply:	6-20V DC, 10 W max.
Operating Environment	
Temperatures:	0° to 60° Celsius
Humidity:	5% to 95% Non Condensing
Dimensions:	215x147x33 mm
Communications:	10/100 BaseT Auto sensing Ethernet
Compliance:	CE, FCC-B part 15

CONTACT

Controlware GmbH
Waldstrasse 92
63128 Dietzenbach
Germany

☎ Tel: +49 6074 858 0
☎ Fax: +49 6074 858 191

✉ Email: cwp-info@controlware.de
🌐 Web: www.controlware-products.com