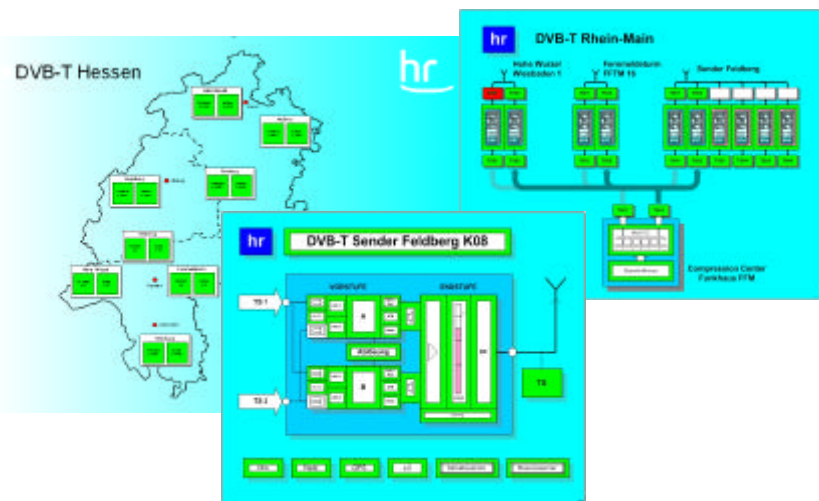


## BOSS BROADCAST NetView

## Broadcast Monitoring System

**BOSS BROADCAST NetView** - A powerful DVB Software System designed for Broadcast Networks, Studios and Services like DVB and IPTV.

- Displays overall network overview, regional sites and detailed equipment view
- Collates all alarms from the whole network, regional sites and devices
- Powerful filtering through extensive correlaton engine
- Extensive Protection/ Backup Management



## Benefits

- **Central, Automated QoS Alarm System**
  - ➔ Single Alarm System for the whole broadcast network lowers Capex
  - ➔ fewer false alarms through effective correlation engine lowers Opex (up to 80%)
- **Fast Fault Location & Service Protection**
  - ➔ Excellent Customer Service
  - ➔ Higher Network Revenues
  - ➔ Lower Network Downtime
- Increase of customer satisfaction and revenues because of centrally controlled and automated backup switching
- It is a vendor independent Monitoring system.
- Easy integration of new devices via SNMP
- Only **one** intuitive GUI for the entire broadcast network
- Fast and secure operation because of the user friendly system handling

## BOSS BROADCAST NetView

### Monitoring for DVB Broadcast networks

BOSS BROADCAST NetView provides **Monitoring** of all devices which are installed in a broadcast network including all regional sites (e.g. transmitter site, studios etc.)

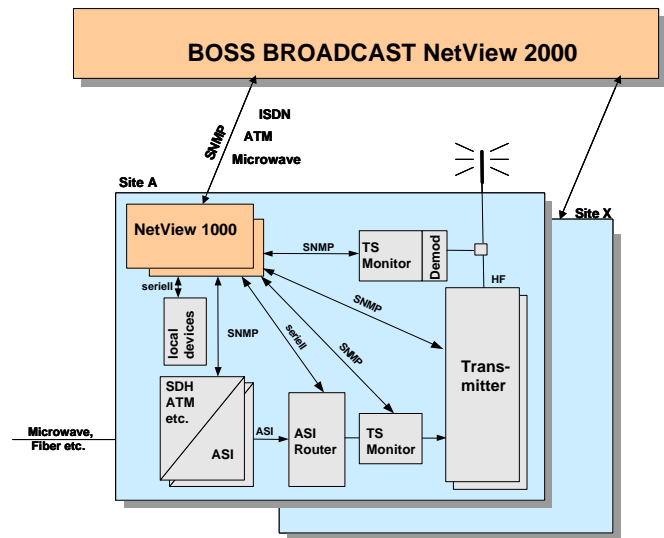
The concept is based on:

■ **NetView 2000:**

The NetView 2000 [Enterprise] system monitors the whole system, either directly connected to devices or connected via the NetView 1000 to remote devices. It process all alarms, performs fault correlation and displays all info on the GUI

■ **NetView 1000:**

The NetView 1000 [Remote] is used at the different sites to extend the monitoring area to locations connected by ISDN/PSTN



### DVB Monitoring Functions

■ **NetView 2000 [Enterprise]**

- × Recording of alarms from all SNMP local and remote devices
- × Visualization of transmission network status
- × Logging of all alarms
- × Alarm correlation
- × Remote control of equipment (e.g. transmitter) via NetView 1000
- × System messages to the users (e.g. report via SMS or e-mail)

■ **Monitoring of a ATSC/DVB-T SFN (Single Frequency Networks)**

- × Continuous analysis of the transmitted MIP information
- × Disconnection of transmission sites in case of endangered SFN operation

■ **NetView 1000 [Remote]**

- × Monitoring of incoming signals, transport stream and transmission equipment
- × Redundancy switching after error detection
- × Forwarding of alarms to NetView 2000
- × Parameter setting for local equipment (default values given by NetView 2000)

■ **NetView 1000 [Standalone]**

- × Direct access to the NetView 1000 via SNMP (remote or on site)
- × Display of all devices of the site
- × Parameter setting for chosen devices

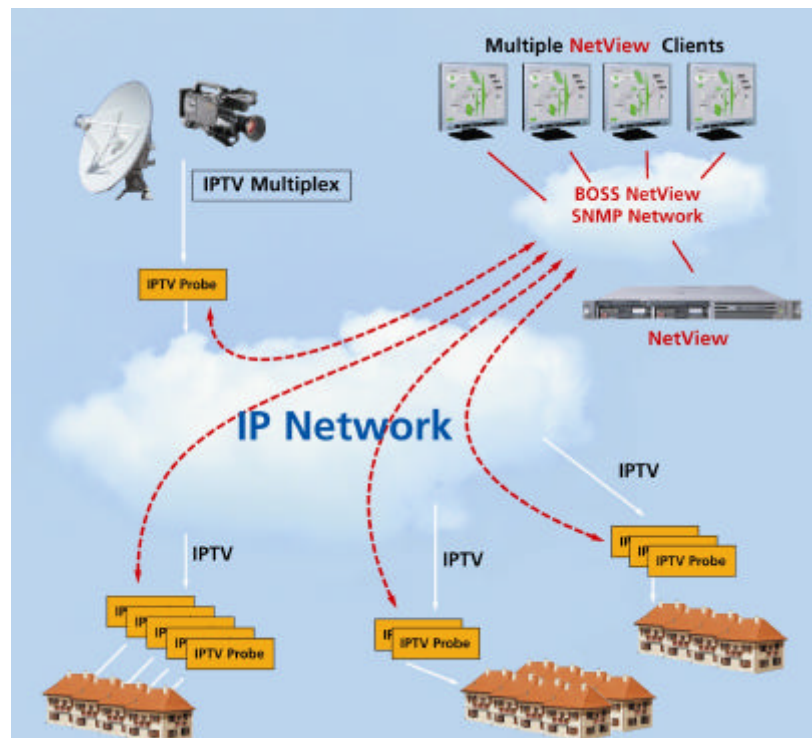
## BOSS BROADCAST NetView

### Monitoring for IPTV Broadcast networks

BOSS BROADCAST NetView provides **Monitoring** at the DVB/IPTV layer of a whole IPTV distribution network, from the Head-End to the DSLAMs.

The concept is based on:

- **NetView 2000:** monitors all SPTS through the whole IPTV system, by collecting and analyzing all IPTV probes located in the IPTV networks. It processes all alarms, performs fault correlation and displays all info on the GUI.
- **IPTV probes:** monitor all SPTS at specific locations in the IPTV network. The NetView support all leading IPTV probes.



### IPTV Monitoring Functions

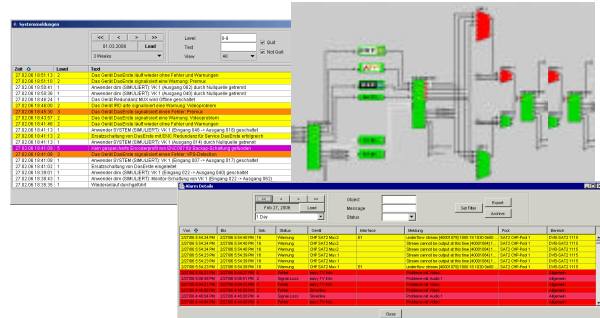
- **NetView 2000 [Enterprise]**
  - × Recording of alarms from all IPTV probes
  - × Collection of IPTV probes performance counters
  - × Visualization of transmission network status per link and per SPTS
  - × Alarm correlation based on faults at locations (topology) and DVB SPTS streams (SPTS-specific QoS)
  - × System messages to the users (e.g. report via SMS or e-mail)
- **IPTV probes**
  - × Monitoring of the QoS of all incoming SPTS/MPTS signals
  - × Multiples IPTV parameters checked: packet loss, jitter, according to:
    - RFC4445
    - TR101 290 Prio 1 errors
  - × Forwarding of alarms to NetView
- **DVB layer monitoring**
  - × Probe: monitoring of all SPTS
  - × NetView 2000: compares the alarms of each SPTS to detect faults

## BOSS BROADCAST NetView

### General Functions and Features

#### ■ Central Management, Monitoring and Control of Network Elements

- ✗ Extensive and multi-screens views of all alarms and system messages
- ✗ Web-based GUI
- ✗ Integrated Universal Element Management with pre-loaded devices MIB
- ✗ MIB import tool
- ✗ Protection Switching: Pre-assigned back-up switching



#### ■ Universal Alarm Management: Collation, Prioritization, Correlation and Display

- ✗ Collates all alarms and messages from all classes of devices
- ✗ Supports all types of broadcast devices
- ✗ Assigns priorities to all alarms
- ✗ Correlation engine dynamically correlates all SNMP alarms before display to the GUI (using operator-defined rules)

#### ■ Fault Location, Archiving and Integration in OSS

- ✗ Faster fault location by using the correlation engine
- ✗ Archiving of all alarms and messages for rollback analysis
- ✗ Possible Integration in a 2-tier Monitoring system with local/regional "BOSS BROADCAST SiteController"

#### ■ User authorization/authentication

### System Solution

#### ■ Client/Server architecture

#### ■ Centralized database (Oracle)

#### ■ Full SNMP support

#### ■ Java application

#### ■ Support up to 500+ devices and 20k+ parameters

**For more information please contact:**

#### Dimetis GmbH

Justus-von-Liebig-Straße 9 D-63128 Dietzenbach Germany

Fon +49 (0) 6074 3010 0 Fax +49 (0) 6074 3010 301

[info@dimetis.de](mailto:info@dimetis.de) [www.dimetis.de](http://www.dimetis.de)