

# TAXI Manager

Network Management Software

# ISDN



The Controlware network management software allows distributed or central management of the comprehensive Controlware ISDN product portfolio via the umbrella network management systems HP OpenView and Tivoli NetView.

The network management software TAXI Manager for OpenView and TAXI Manager for NetView extend the functionality of both platforms by enabling the exact representation of Controlware ISDN devices and their status, as well as the status of leased line and ISDN connections. All events (i.e. alarms and messages) generated by the devices are clearly represented on the network management topology maps, and can be managed with specific tools. In addition, events are displayed in the event logfile by using different colours for icons or manageable objects such as modem lines or ISDN connections for a comprehensive event summary.

Networks are depicted in form of dynamic topology maps with hierarchical submaps allowing the user to simultaneously view several levels on his screen. Additional windows can be opened up when specific information about a network element such as alarms or status messages is required.

[access\\_the\\_world](http://www.controlware.com)

**controlware**  
communicationssystem

# TAXI Manager

Network Management Software

## Features

### Remote configuration

The entire configuration of the ISDN devices can be handled via the TAXI Manager software directly from the OpenView or NetView platforms with the view of the devices being identical to that on the NMS TAXIDRIVER, Controlware's proprietary network management system. The graphic representation corresponds with the physical appearance of the respective device (i.e. TAXI-System, IBS). Preconfiguration of individual modules, as well as downloading the information at a later stage is also possible.

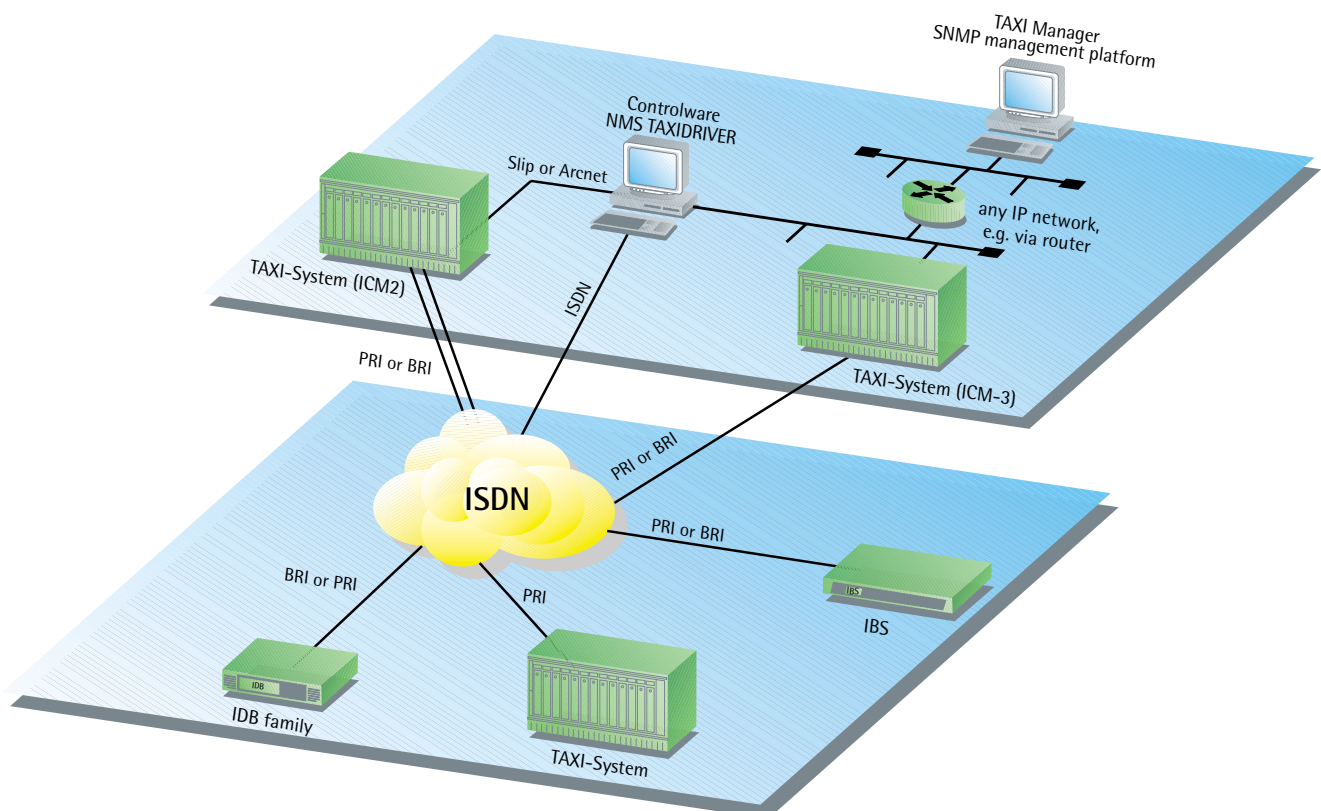
### Full configuration management of Controlware ISDN products

The TAXI manager software monitors vital parameters of the entire network and can directly access all manageable devices. Similar to Controlware's NMS TAXIDRIVER network management system a database configuration panel is available for each ISDN device within the network allowing easy configuration, verification and modification of all modules. All events such as alarms or status messages are displayed directly on the OpenView or NetView platform.

### Alarm management

All alarms and messages generated by the managed Controlware devices are forwarded to the OpenView or NetView platform via the SNMP V1 (Simple Network Management Protocol Version 1) protocol. SNMP makes use of the IP/UDP transfer protocol to address each unit. Therefore, every IDB or TAXI-System must be assigned a unique IP address within the network.

## Network Management via OpenView



## Hierarchical maps

The entire network is displayed using hierarchical maps. The user can thus view several network levels on his screen simultaneously. Each device can appear on more than one map. Thus the network can be watched from different views.

## Multiple users

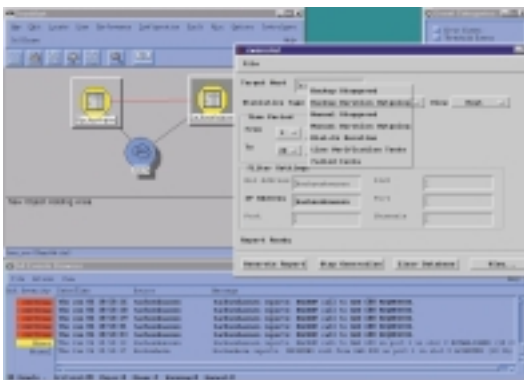
Information about the network with its managed devices can be accessed by more than one user at the same time. The OpenView or NetView security service authenticates each user with a user ID, group ID, and password. Also, an additional login control which includes the restriction of a user's access to specific days and hours and to a specific NMS platform is possible.

## Statistical Analysis

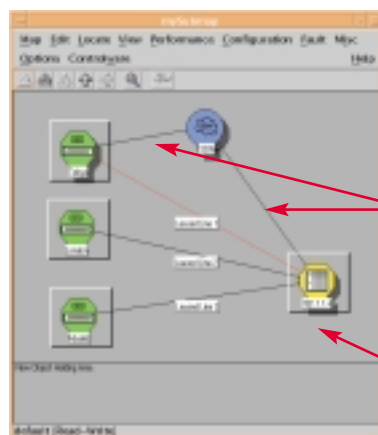
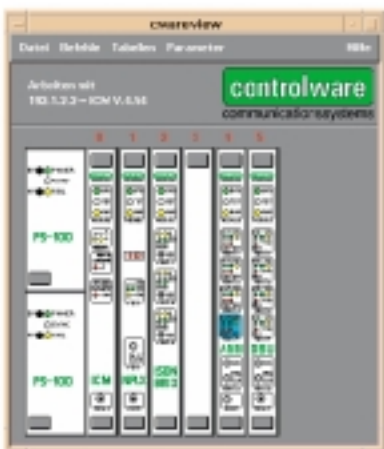
All connection related information, such as backup connection duration, backup quantity, connection duration, ISDN line test results, are stored in a database. The database data can be used to perform further analysis of this data for billing or service level agreement reports. A report generator will be implemented in the next software releases.

## Features

- Full configuration management of Controlware ISDN products (TAXI, IBS, IBS TA, IDB, PRIMUS)
- Remote configuration
- Alarm management
- Hierarchical maps
- Multiple users
- Management of leased line and ISDN connections
- Support of TRAP, GET and SET commands
- Support of standard MIB II and Controlware specific MIB-Tree (Ref. no. 1072)
- Manual connect via mouse click
- Connection database
- ISDN line verification test support
- Database interface (Sybase)



Statistical Report Window



*New ISDN connections are displayed in the map*

*Icon colour turns from red to yellow as soon as backup is established*

Visual Alarm Handling in Network Map

# TAXI Manager

Network Management Software

# ISDN

## Technical Specifications

- **Maximal Number of Managed Devices** Limited only by memory and system performance (license in steps of 250 hosts)
- **Protocols Used** SNMP version 1
- **Transport Media Directly Supported** Ethernet, Token Ring,
- **Products Supported** ICM-2 SW Rel >4.19, ICM-3 SW Rel. 1.0, IDB 64/2 (SW Rel >4.1), IDB-384, IDB-512, IDB-1472, IDB-1920, IBS Single Port, PRIMUS
- **Requirements of the HP OpenView Platform on HP UX**
- **Hardware Requirements for HP-Risc 9000 Platform** HP-Risc 9000 712/60 or higher  
64 MB RAM space recommended  
Colour graphics resolution 1280 x 1024 recommended  
Free disk space: 100 MB plus 120 MB Swap space  
LAN adapter
- **Software Requirements for HP-Risc 9000 Platform** OpenView Entry Network Node Manager 4.x, 5.x or 6.10  
HP-UX 10.10, 10.20 incl. X-Windows and OSF/Motif  
HP OpenView Network Node Manager 4.1 or 5.x
- **Requirements of the HP OpenView Platform on Sun Solaris**
- **Hardware Requirements for Sun Solaris Platform** SunSPARC and ultra servers and workstations  
RAM: 64 MB recommended (32 MB minimum for Network Node Manager 250)  
Bit-mapped display or X-terminal colour graphics: 1024x768 minimum resolution (1280x1024 recommended for optimum clarity)  
Free disk space: 160 MB plus 120 MB of swap space
- **Software Requirements for Sun Solaris Platform** Solaris 2.6  
OpenWindows  
HP OpenView Network Node Manager 4.1, 5.x, 6.10.
- **Requirements of the IBM NetView Platform**
- **Hardware Requirements for RS/6000 Platform** RS/6000 model 250 or higher  
Bit-mapped display or X-Terminal  
Colour graphics resolution 1280 x 1024 recommended  
Free disk space: 200 MB plus LAN adapter
- **Software Requirements for RS/6000 Platform** NetView version 4.1, 5.x will follow IBM AIX operating system version AIX 4.1
- **Requirements of the NMS TAXIDRIVER PC Platform**
- **Hard-/Software Requirements** Windows 3.11 or Windows 95  
NMS TAXIDRIVER SW Rel. 2.24 or higher  
Proxy agent SW Rel. 1.10  
Standard network interface card with IP support (Ethernet, Token-Ring, FDDI)

**Controlware GmbH  
International Headquarters**  
Waldstrasse 92  
D-63128 Dietzenbach  
Germany  
Tel. +49 60 74 8 58-00  
Fax +49 60 74 8 58-191  
e-mail: cwp-info@controlware.de  
www.controlware.de

**Australia**  
Controlware Australia Pty. Ltd.  
Tel. +61 2 8853 9200  
e-mail: sales@cware.com.au

**Austria**  
Controlware  
Kommunikationssysteme GmbH  
Tel. +43 22 35 8 65 46- 0  
e-mail: info@controlware.at

**Belgium**  
Controlware Northern Europe NV-SA  
Main Office  
Tel. +32 2 712 0200  
e-mail: info@controlware.be

**Canada**  
Controlware Inc. - Canadian Branch  
Tel. +1 705 726 2997  
e-mail: info@controlware.ca

**France**  
Controlware France S.A.  
Tel. +33 1 46 12 77 00  
e-mail: commercial@controlware.fr

**Italy**  
Controlware Italia  
Tel. +39 02 48 55 94 21  
Fax +39 02 46 94 998

**Netherlands**  
Controlware Northern Europe SA/NV  
Netherlands Branch  
Tel. +31 30 28 75 110  
e-mail: info@controlware.nl

**Singapore**  
Controlware Asia-Pacific Pte. Ltd.  
Tel. +65 325 1700  
e-mail: info@controlware.com.sg

**South Africa**  
Controlware  
Communication Systems (Pty) Ltd.  
Tel. +27 (11) 315 7870  
e-mail: m.bremer@controlware.co.za

**Spain**  
Controlware  
Communication Systems, S.A.  
Tel. +34 91 678 1204  
e-mail: marketing@controlware.es

**Switzerland** (German speaking area)  
Controlware AG  
Tel. +41 55 415 64 74  
e-mail: info@controlware.ch

**Switzerland** (French speaking area)  
Controlware SA  
Tel. +41 21 802 22 14  
e-mail: alain.bromm@controlware.ch

**United Kingdom**  
Controlware Communications Systems Ltd.  
Tel. +44 1488 649 200  
e-mail: info@cware.co.uk

**United States**  
Controlware Inc.  
Tel. +1 732 919 0400  
e-mail: info@cware.com

