

Access BackUp

IBS Picco E1

Access Line Backup 64 / 2048 Kbit/s
for E1 / T1 leased lines



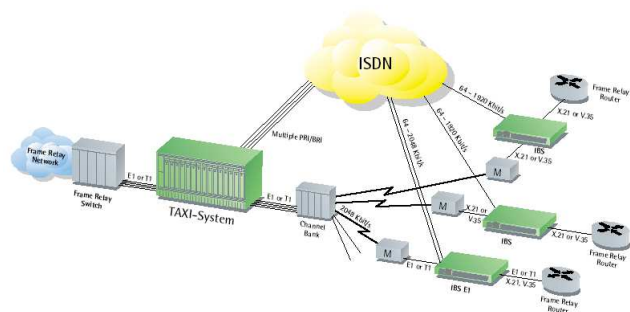
- ▶ Increased Security
- ▶ Compensates line failures
- ▶ Connects to alternate locations
- ▶ High Quality with compact cost effective solution
- ▶ Dedicated hardware-based TA and backup concept
- ▶ Protocol transparent and easy-to-integrate solution
- ▶ Worldwide approvals
- ▶ Service through Controlware offices worldwide

IBS Picco E1

The IBS Picco Family consists of automatic dial backup units for dedicated leased lines in large networks (WAN, MAN and local loops). They ensure the availability of important data links and vital applications by immediately establishing a backup link via ISDN at 64 to 2048 Kbit/s whenever the monitored leased line fails. The lean hardware-based backup concept together with worldwide approvals makes the IBS Picco Family ideally suited for national or international corporate and carrier networks.

The IBS Picco Family support all professional features necessary to enable the highest levels of network availability including automatic backup and recovery, multiple static and dynamic call criteria, backup path verification tests, access security, local and remote software download, SNMP and bonding mode 1 aggregation and synchronisation. Upon introduction to the network no protocol-dependent configuration or topology changes are necessary and routing tables remain unaltered. Full bandwidth of the leased line is available to the user as no data is used by the IBS Picco for monitoring the availability of the WAN connection. Backup switching is user configurable upon data quality via HDLC monitoring or loss of WAN connection. The IBS Picco Family are fully compatible with Controlware's TAXI-Manager Software and can also integrate with any systems supporting SNMP V1 standard. IBS Picco verifies calling parties id numbers (CLI, DDI) and optional passwords via INBAND during setup providing the perfect solution for international backup connections where such information is often suppressed by ISDN gateways. Different ISDN protocols may be selected via configuration parameters which makes the IBS Picco ideally suited for

corporations running a global network coping with different ISDN standards in the respective countries.



Configuration, remote management and software download enables fast and easy installation and maintenance. Operating software can be downloaded to any remotely installed device via ISDN or IP based networks and backup bandwidth can be upgraded remotely via feature key without requiring the presence of service personnel. Several programmable time windows allow the user to define time-of-day-dependent backup procedures. A built-in disaster recovery function automatically establishes a connection to an alternate location when

[access_the_world](#)

controlware
communicationsystems

the pre-configured back-up connection cannot be successfully established. In order to ensure the availability of the ISDN path, a line verification test automatically checks the availability of the ISDN network by conducting a simulated backup at regular intervals. All events are forwarded to the network manager and also stored in local log files.

In event of power failure no interruption of the leased line occurs because data is bridged using failsafe relays. The IBS Picco is fully compatible to Controlware's ISDN Backup range and may also be used in any combination with IBS Single Port, TAXI-Systems and can be fully managed with the TAXI-Manager software.

Germany

Controlware GmbH
International Headquarter
Waldstrasse 92
D-63128 Dietzenbach
Tel. +49 60 74 85 8-0
Fax +49 60 74 85 8 -191
e-mail: cwp-info@controlware.de
www.controlware.com

Australia

Controlware Australia Pty. Ltd.
Tel. +61 2 88 53 92 00
e-mail: sales@cware.com.au

Belgium

Continental Europe
Tel. +32 2 712 02-00
e-mail: info@controlware.be

France

Controlware France S.A.
Tel. +33 1 46 12 77 00
e-mail: commercial@controlware.fr

Italy

Tel. +39 02 48559421
e-mail: info@cware.it

United Kingdom

Controlware Communications
Systems Ltd.
Tel. +44 1653 584 500
e-mail info@cware.co.uk

United States of America

Controlware Inc.
Tel. +1 732 919 04 00
e-mail info@cware.com

Locations in Germany:

Berlin, Düsseldorf, Frankfurt,
Hamburg, Hannover, Ingolstadt,
Kassel, Leipzig, München, Stuttgart

Technical Specifications

▶ G.703/G.704 Leased Line speed	64 kBit/s – 2048 kBit/s
▶ ISDN Backup Speed	64 kBit/s – 2048 kBit/s
▶ D-Channel Protocols	ETSI CE (NET 3), ATT 5ESS9, ATT 5ESS10, Northern Telecom DMS 100, US National ISDN 2, NTT Japan, Hong Kong Telephone, Korean OP, ECMA/QSIG
▶ Leased Line to DTE Interface	G.703/G.704 E1/T1
▶ Leased Line to DCE Interface	G.703/G.704 E1/T1 interface
▶ Protocol Independence	e.g. TCP/IP, Frame Relay, SNA, X.25 etc.
▶ Bonding Compliant	Interoperability Bonding Mode 1
▶ Backup-Features	
ISDN line test	None, daily, weekly, monthly
LL test	Leased Line test via BERT test pattern
▶ Session Verification Test	Full backup test without interruption of LL
▶ Multiple time windows	Up to 10 time windows
▶ Security Features	Check of incoming ISDN numbers and inband passwords 3-level supervisor passwords
▶ Management	via SNMP protocol using dedicated timeslot in LL or dedicated timeslot in dial-up PRI, via Ethernet or ISDN connection
Local and remote Configuration and alarm indication	
Controlware Supervisor	user friendly windows software for local and remote configurations, status informations and test functionalities, SNMP traps
Network Management Systems	Central NMS-PC or UNIX NMD Controlware TAXI manager for HP OpenView
▶ Power Supply	AC: Voltage 115 V AC – 230 V AC (Autorange), 50-60 Hz, input current 500mA DC: 48 V, input current 400mA
▶ Physical and Enviromental Secifications	
Dimensions	45mm x 247mm x 207mm (H x W x D)
Operation Temperature	+5°C to +40°C (+41°F to +104°F)
Storage Temperature	-10°C to +60°C (+14°F to +140°F)